

# Measure L

## Bond Construction Program

**Berryessa Union School District**

**Thanks Our Community  
For All Our Kids, All Our Schools**

[www.berryessa.k12.ca.us](http://www.berryessa.k12.ca.us)

Thelma Boac Hugo Jimenez Richard Claspill David Cohen Khoa Nguyen

Superintendent  
Will H. Ector, Jr.

Deputy Superintendent  
Phuong Le

Board of Trustees

# Citizens' Bond Oversight Committee Meeting

Wednesday, December 2, 2015

6:30PM - 7:30PM

**Berryessa Union School District  
Board Meeting Room**

1376 Piedmont Road San Jose, CA 95132

**Berryessa Union School District**  
1376 Piedmont Road, San Jose, CA 95132

Measure L Citizens' Bond Oversight Committee Meeting  
December 2, 2015  
6:30PM – 7:30P  
PM  
District Office Board Room

## Agenda

### 1. Call to Order

#### a. Roll Call

Kevin Costello - Chair

Martin Michaels – Vice Chair

Adrienne O'Leary

Amy Chen

Frank Cancilla

Susan Fowle

#### b. Adoption of Agenda

#### c. Approve CBOC Meeting Minutes from August 5, 2015

### 2. Public Comments

### 3. Reports

#### a. Presentation of the Bond Measure L Annual Financial and Performance Audit (2014-15)

Kevin Brejnak

#### b. Report on construction progress to date

Ricardo Reyes

#### c. Report on tour facilities by Bond Committee

Ricardo Reyes

#### d. District report on fencing plans for each school

Ricardo Reyes

#### e. Annual Financial Report for 2014-15 Fiscal Year

Phuong Le

#### f. Quarterly Financial Report for 2015-16 Fiscal Year

Phuong Le

### 4. Review and Action

#### a. Schedule report to the School Board (2014-2015)

Kevin Costello

### 5. Adjournment

Kevin Costello

**Berryessa Union School District  
1376 Piedmont Road  
San Jose, CA 95132**

Measure L Citizens' Oversight Committee Meeting  
August 5, 2015  
6:30pm – 8:00pm

**REGULAR MEETING MINUTES**

Members Present: Kevin Costello, Chair  
Martin Michaels, Vice Chair  
Adrienne O'Leary  
Frank Cancilla  
Susan Fowle  
Amy Chen

Members Absent: None

District Staff Present: Will Ector, Superintendent  
Phuong Le, Deputy Superintendent  
Ricardo Reye, Director of Bond Facilities and Modernization  
Jan Yi, Bond Accountant

Public Present: None

---

1. Call to Order and Introductions

**Minutes**

Mr. Costello called the meeting to order at 6:33pm. Committee members briefly stated their names as introduction.

a. Roll Call

**Minutes**

Kevin Costello, Chair  
Martin Michaels, Vice Chair  
Adrienne O'Leary  
Frank Cancilla  
Susan Fowle,  
Amy Chen

b. Approval of Agenda

**Minutes**

Ms. O’Leary made a motion to approve the Agenda for the August 5, 2015 Measure L Citizens’ Oversight Committee Meeting. The motion was seconded by Mr. Michaels and approved by the committee.

2. Public Comments

**Minutes**

There were no comments

3. Reports

a. Efforts to Fill the Committee

**Minutes**

Mr. Costello requested that the district proceed posting with the San Jose Mercury News Internal Affairs in an effort to fill the current vacancy.

b. Report on Incoming Monies

**Minutes**

Phuong Le, Deputy Superintendent reviewed the basic program summary to the committee and provided the committee with a hand out.

c. Sample of Quarterly Reports

**Minutes**

Phuong Le reviewed a sample layout of how the quarterly cost reports will appear.

d. Report on Current School Improvements

**Minutes**

Ricardo Reyes, Bond Director with BUSD, provided a copy of the presentation presented to the board in June. Mr. Reyes, reviewed the overall data and ongoing project status, many projects closing out and few more projects added.

e. Report on Scheduled Improvements for This School Year

**Minutes**

Phase 1 summer 2015 projects including painting, paving, playground, technology, and fencing are now coming to a close. Phase 2 in the planning stages, 2016 summer includes: Modernization, Flexible Instructional Space, additional paving, central kitchen.

4. Review and Action

a. Schedule Committee Tour

Minutes

Mr. Costello invited the committee for a site tour, the committee unanimously decided on a Tuesday sometime in September/October, time tentatively set for 9am. Mr. Reyes will create a touring schedule and finalize the date and time in the coming months.

b. Scheduled Report to the Board (2014-2015)

Minutes

Measure L Citizens' Oversight Committee's report to the District Board to be presented after the audit is complete in December. Phuong Le and Mr. Costello will meet in December and Mr. Costello welcomed the committee to be a part of developing the report.

c. Approve CBOC Meeting Minutes from June 10, 2015

Minutes

Mr. Michaels made a motion to approve the CBOC Meeting Minutes from June 10, 2015. The motion was seconded by Ms. O'Leary and approved by the committee. Next meeting to be held on December 2, 2015 at 6:30pm, board meeting room at Berryessa District Office.

5. Adjournment

Minutes

Motion was made to adjourn, seconded and passed to adjourn the meeting at 7:43pm.

Minutes from August 5, 2015 approved on:

---

---

Kevin Costello, Committee Chairperson

---

Will Ector, Jr., Superintendent



# **Berryessa Union School District**

## **Measure L Bond Construction Program**

Board of Trustees' Update

November 17, 2015

# Introduction

The following presentation is intended to provide the Board of Trustees with an update on the progress of Measure L Construction Bond Projects. These are projects that are currently active throughout the District.

November 17, 2015

# **Agenda:**

**Construction Projects for 2016**

**Construction Project Update for 2015**

**Design and Construction Projects for  
2016/2017**

November 17, 2015



# Construction Projects for 2016

1. **Central Kitchen**
2. F.I.S./School Modernization
  - Noble ES
  - Northwood ES
  - Sierramont MS
  - Summerdale ES
  - Vinci Park ES (Resolving Scope Issues and Schedule Adjustment)
3. Energy Conservation Project - Solar
4. Phase II LAN Upgrade Cable Removal and Replacement
5. Phase I LAN Upgrade Update

November 17, 2015



## CENTRAL KITCHEN

CHILD NUTRITIONAL SERVICES  
BERRYESSA UNION SCHOOL DISTRICT

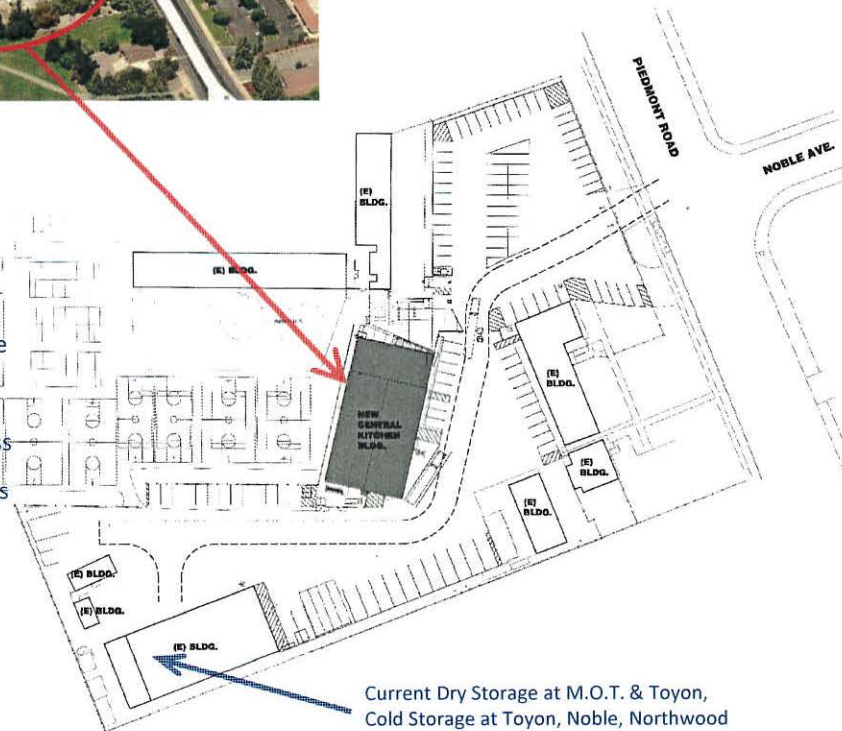


IBI GROUP Architecture Planning  
11/17/2015



•Priorities:

- Increase Menu Offerings
- Centralize Administration & Staff
- Consolidate Food Processing & Storage
- Update Equipment – Current & Future
- Efficient Receiving and Delivery Process
- Increase Vending and Catering Services
- Part of M.O.T. Complex

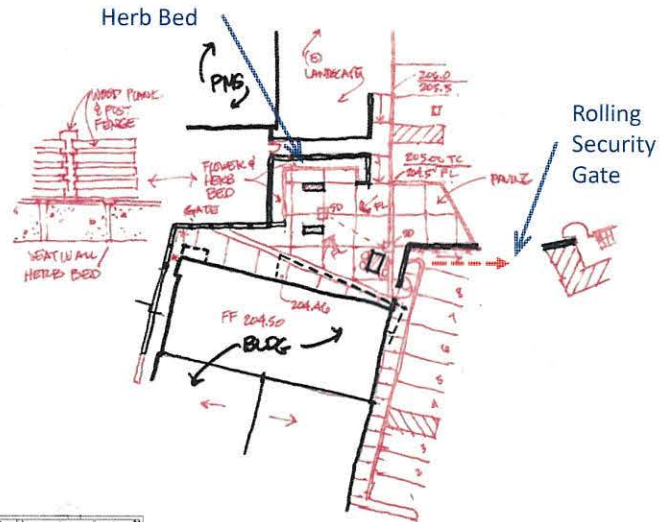


VISION

Current Dry Storage at M.O.T. & Toyon,  
Cold Storage at Toyon, Noble, Northwood

Design Derived From:

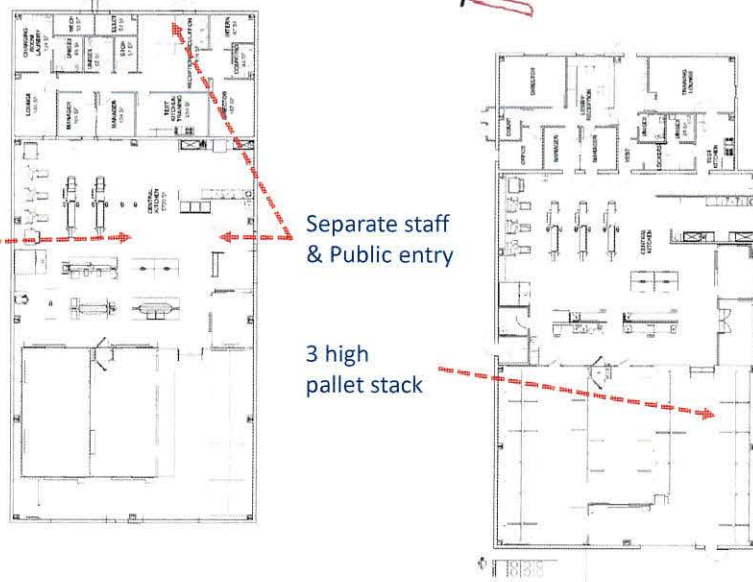
- Population being served; present and future
- Visited local central kitchen facilities; pros and cons
- Food Production & Staff Work Activities
- Food Receiving and Distribution Process
- Secondary Impacts on MOT facilities & site



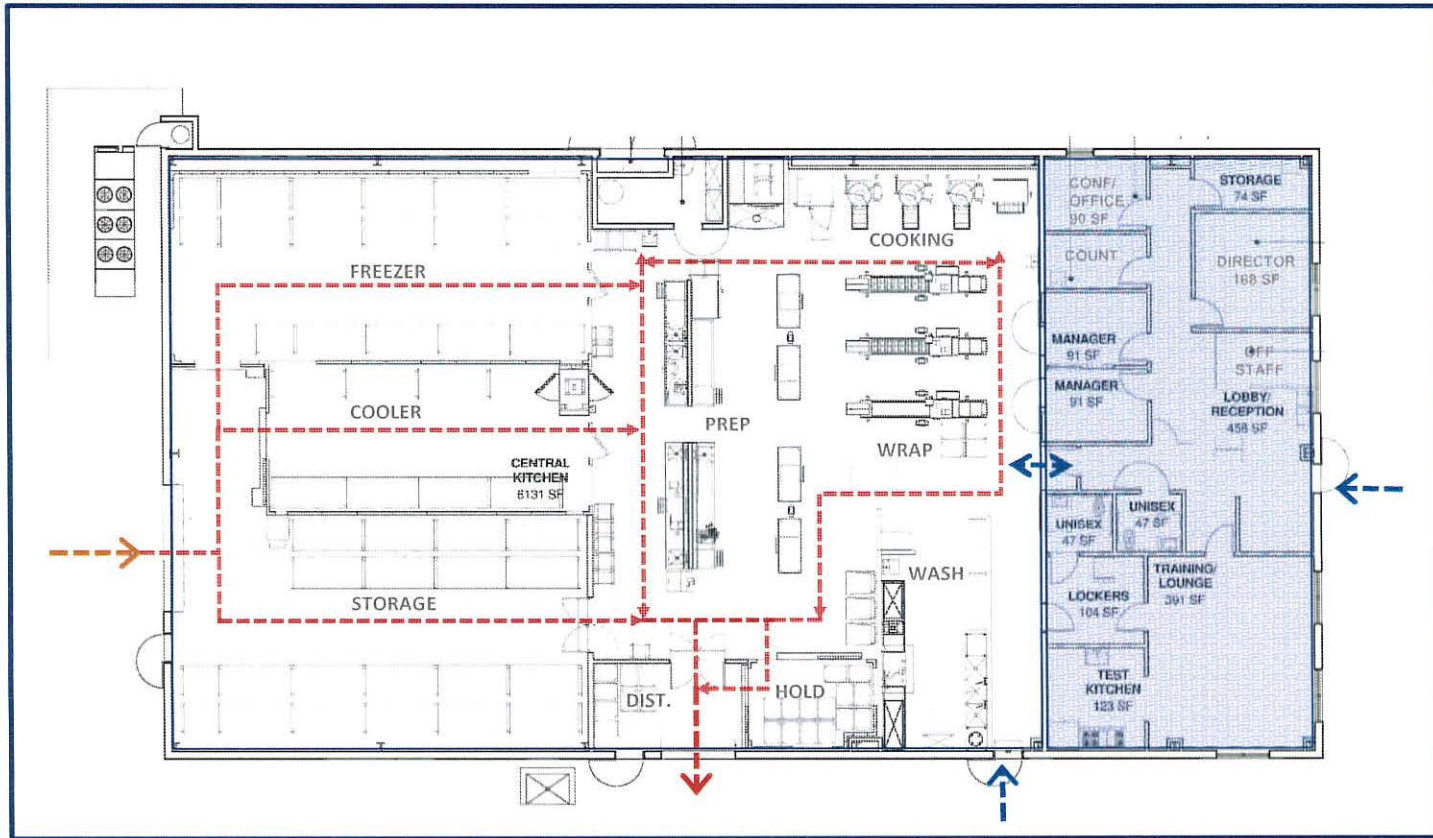
Flow of work should be sequential

Separate staff & Public entry

3 high pallet stack



CONCEPTS

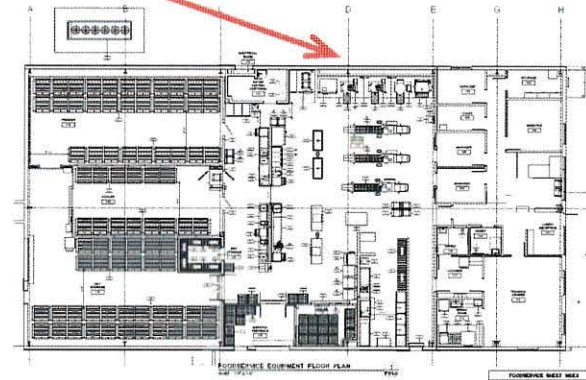
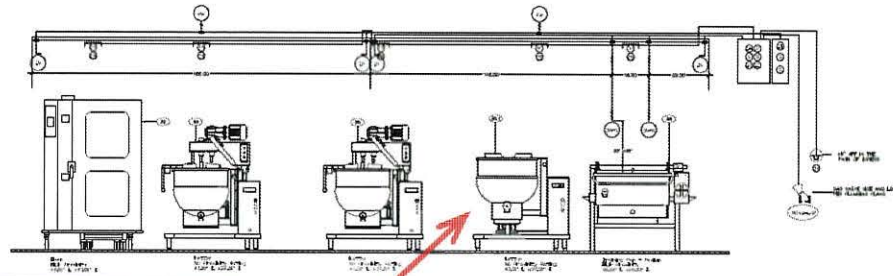


Receiving/Storage

Kitchen/Distribution

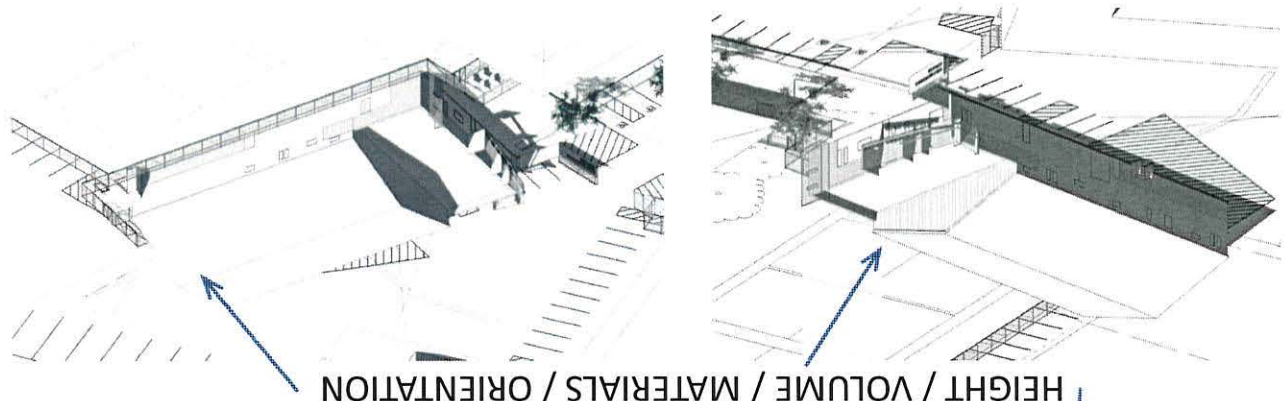
Admin./Public

# FOOD PROCESSING

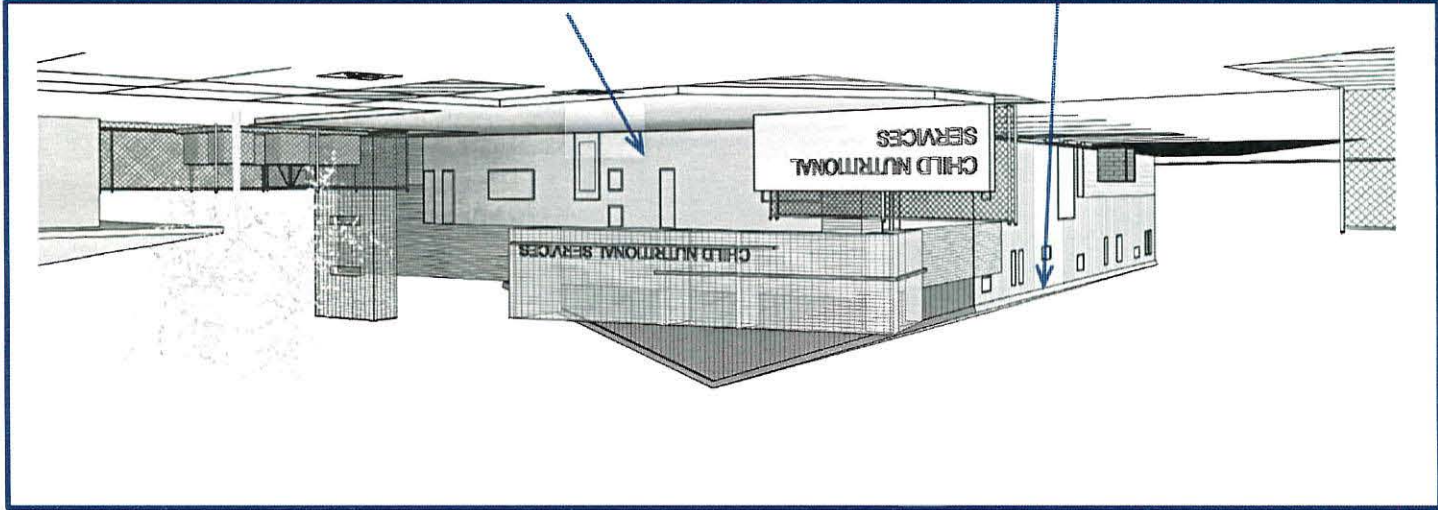


## FOOD SERVICE EQUIPMENT

MASSING STUDIES



HEIGHT / VOLUME / MATERIALS / ORIENTATION





M.O.T. & C.N.S. JOINT ACCESS VIA  
SECURITY GATES INTO M.O.T. YARD

NORTH LIGHT

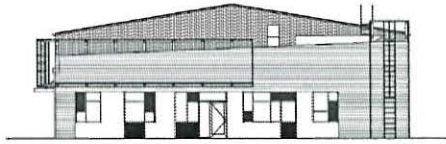
OPEN TOWARDS PARKING

FRONT WAITING COURT

VISIBLE SIGNAGE

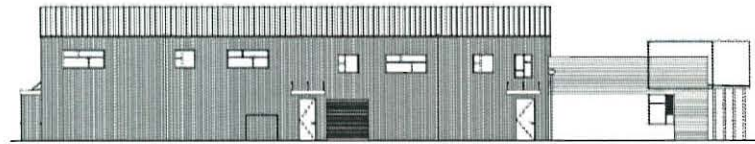
## PUBLIC ENTRY





1 NORTH ELEVATION

FACES PIEDMONT M.S.



2 EAST ELEVATION

FACES M.O.T. BUILDING



3 SOUTH ELEVATION

FACES M.O.T. RELOCATED  
BUS PARKING



4 WEST ELEVATION

FACES BASKETBALL COURTS

10'-0" HIGH FENCE

## RELATION TO SURROUNDING AREA



SEPARATE KITCHEN STAFF ENTRY

GATE TO FRONT WAITING COURT

DAYLIGHT INTO KITCHEN & STORAGE

LIMITED VEHICLE PARKING

LARGE DELIVERY TRUCK UNLOADING

SEPARATION FROM PIEDMONT M.S.

DISTRICT TRUCK LOADING

## KITCHEN ENTRY / DISTRIBUTION



ROLL UP DOOR FOR BULK DELIVERIES

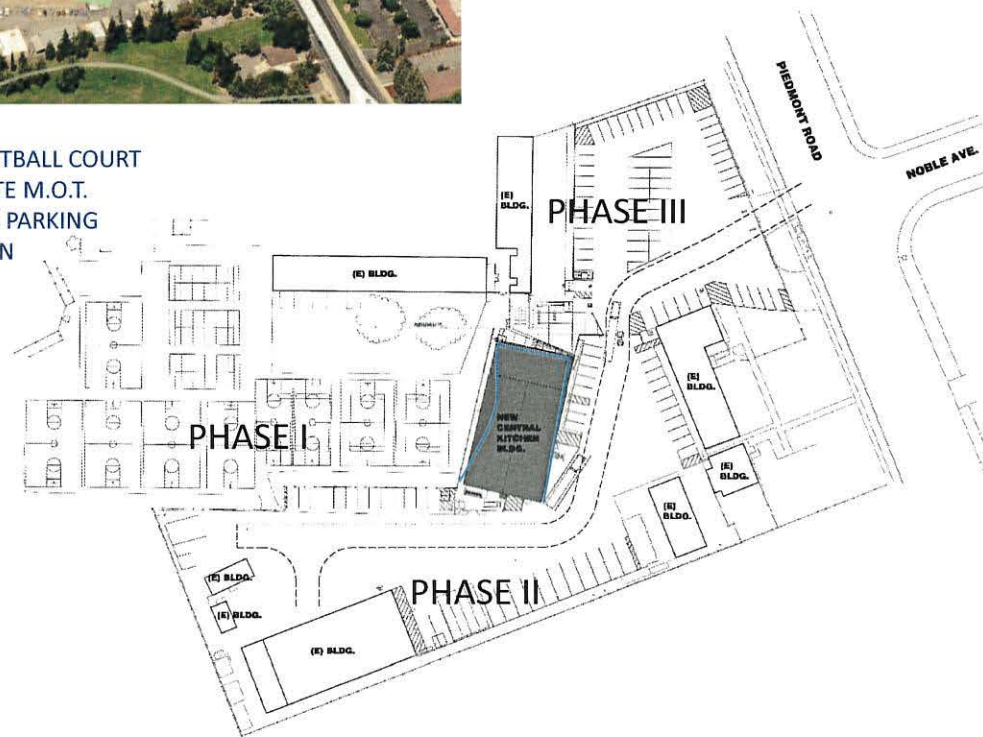
SECURED BUILDING SERVICE AREA

LARGE DELIVERY TRUCK UNLOADING

## RECEIVING & UNLOADING



- Phase I: RELOCATE BASKETBALL COURT
- Phase II: DEMO / RELOCATE M.O.T.  
YARD STORAGE & PARKING
- Phase III: CENTRAL KITCHEN



# PHASING



CENTRAL KITCHEN

- Providing Healthy Meals



# **Construction Projects for 2016**

## **Central Kitchen**

### **Bid, Award, Construction, and Closeout**

#### Next Steps:

- Complete Drawings for submission to DSA 11/2015
- DSA Review (This will be for review only.)/Finalize Bidding Strategy 11/2015
- Bidding/Award 1/2016 – 3/2016
- Contractor Mobilization 4/2016
- Begin Construction 4/2016
- Construction Complete 10/2016
- Training and Turning over of Facility to District 10/2016
- Testing and Adjusting
- Closeout
- Open and Functioning

November 17, 2015

# Construction Projects for 2016

1. Central Kitchen
2. **F.I.S./School Modernization**
  - **Noble ES**
  - **Northwood ES**
  - Sierramont MS
  - Summerdale ES
  - Vinci Park ES (Resolving Scope Issues and Schedule Adjustment)
3. Energy Conservation Project - Solar
4. Phase II LAN Upgrade Cable Removal and Replacement
5. Phase I LAN Upgrade Update

November 17, 2015



# Construction Projects for 2016

## 21<sup>st</sup> Century Learning Environments

### Flexible Instructional **S**pace

- Flexible
- Timeless
- Creative
- Enterprising

### In support of the 4 C's

- **C**reativity
- **C**ritical Thinking
- **C**ollaboration
- **C**ommunication

November 17, 2015



## **BERRYESSA UNION SCHOOL DISTRICT NOBLE AND NORTHWOOD ELEMENTARY SCHOOLS**

FLEXIBLE INSTRUCTION SPACE  
AND RELATED CAMPUS MODERNIZATIONS

**DOUGHERTY + DOUGHERTY**



DOUGHERTY + DOUGHERTY ARCHITECTS  
11 17 15

Berryessa Union School District  
Modernization

# INTRODUCTION

## TEAM MEMBERS

### ARCHITECTURE

#### DOUGHERTY + DOUGHERTY ARCHITECTS LLP

- + Gray B. Dougherty, AIA, LEED AP
- + Steve Parker, LEED AP
- + Brandon Featherstone
- + Zoe Liang

### COST ESTIMATING

#### RGM AND ASSOCIATES

- + Ralph Caputo, CEO & PRESIDENT
- + Jalil Bazyar, P.E.



DOUGHERTY + DOUGHERTY ARCHITECTS  
11.17.15

Berryessa Union School District  
Modernization

# INTRODUCTION

## PROJECT SCOPE



DOUGHERTY + DOUGHERTY ARCHITECTS  
11.17.15

Berryessa Union School District  
Modernization

# INTRODUCTION

## PROJECT PROCESS TO DATE

- + MEETING WITH THE DISTRICT
- + SITE ASSESSMENTS
- + COLLABORATION WITH STAKEHOLDERS
- + COORDINATION WITH CONSULTANTS
- + REFINING THE BUDGET WITH RGM



DOUGHERTY + DOUGHERTY ARCHITECTS  
11.17.15

Berryessa Union School District  
Modernization

# GENERAL MODERNIZATION SCOPE

## NOBLE & NORTHWOOD

- + DRINKING FOUNTAINS / ACCESSIBLE UPGRADES
- + WINDOW REPLACEMENT
- + PAVING REPAIR
- + EXTERIOR PAINTING
- + FLOOR FINISHES UPGRADES
- + M.P STAGE & CURTAIN UPGRADES
- + SPECIAL PROJECTS

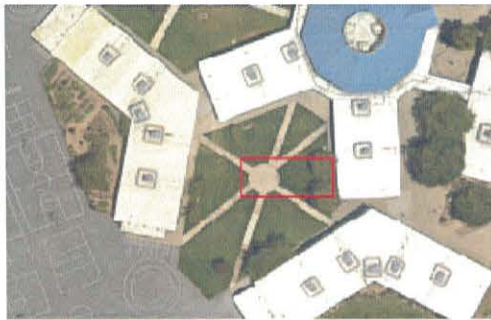


DOUGHERTY + DOUGHERTY ARCHITECTS  
11.17.15

Berryessa Union School District  
Modernization

# SITE INTERVENTIONS

GOALS | NOBLE



EXISTING QUAD

## GOALS FOR THE QUAD

- ENHANCE SECURITY BY INCREASING LIGHTING
- UTILIZE THE CENTRAL NODE BY IMPROVING SHADING, SEATING AND CONNECTION

## SOLUTION

**CREATE SHADED  
EXTERIOR LEARNING SPACE  
AS AN EXTENSION OF F.I.S**

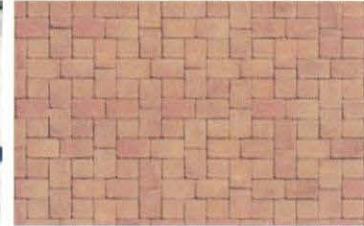
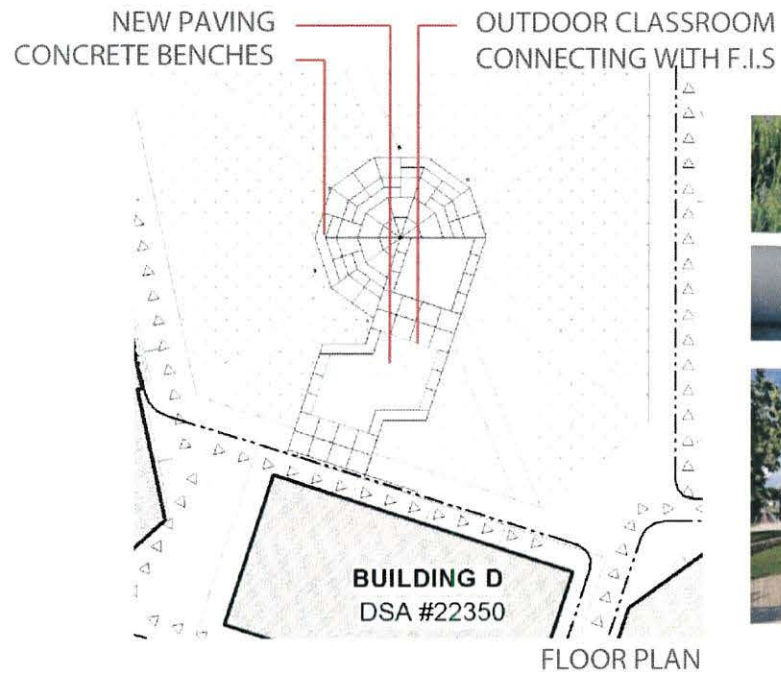


DOUGHERTY + DOUGHERTY ARCHITECTS  
11.17.15

Berryessa Union School District  
Modernization

# SITE INTERVENTIONS

EXTERIOR CLASSROOM | NOBLE



DOUGHERTY + DOUGHERTY ARCHITECTS  
11 17 15

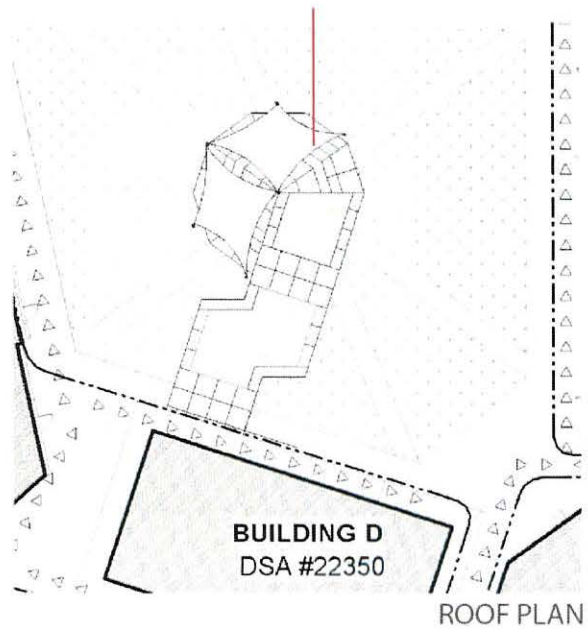
Berryessa Union School District  
Modernization



# SITE INTERVENTIONS

EXTERIOR CLASSROOM | NOBLE

SHADING DEVICE WITH MOUNTED LED LIGHTS

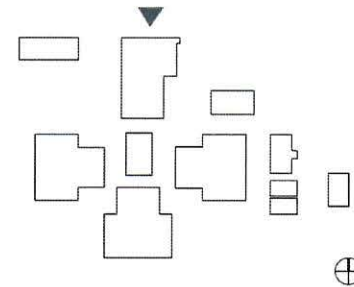


DOUGHERTY + DOUGHERTY ARCHITECTS  
11 17 15

Berryessa Union School District  
Modernization

# SITE INTERVENTIONS

GOALS | NORTHWOOD



## GOALS FOR THE ENTRANCE

**BUILD SCHOOL IDENTITY & HIDE MECHANICAL EQUIPMENT  
BY CREATE AN ENTRANCE TRELLIS WITH RAIN CANOPY**

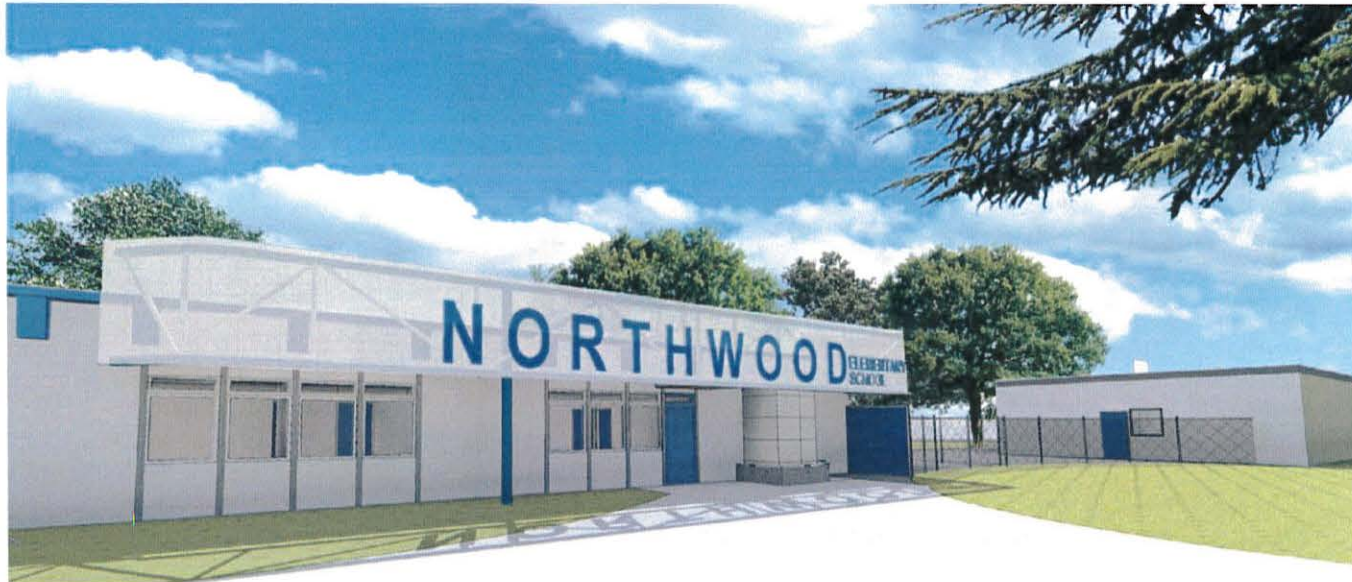


DOUGHERTY + DOUGHERTY ARCHITECTS  
11 17 15

Berryessa Union School District  
Modernization

# SITE INTERVENTIONS

ENTRANCE TRELLIS | NORTHWOOD



DOUGHERTY + DOUGHERTY ARCHITECTS  
11.17.15

Berryessa Union School District  
Modernization

# FLEXIBLE INSTRUCTION SPACE

## GOALS

Through the design of the new space, we hope to ...

- › inspire imagination in students
- › promote integrated learning and creativity
- › increase student collaboration and communication
- › boost hands-on interaction



DOUGHERTY + DOUGHERTY ARCHITECTS  
11 17 15

Berryessa Union School District  
Modernization

# FLEXIBLE INSTRUCTION SPACE PROCESS



DOUGHERTY + DOUGHERTY ARCHITECTS  
11.17.15

Berryessa Union School District  
Modernization

# FLEXIBLE INSTRUCTION SPACE

## STRATEGIES

### -THE SPACE

FLEXIBLE INSTRUCTIONAL SPACE  
MULTIPLE CLASSES AT A TIME  
COLORFUL AND ENERGETIC

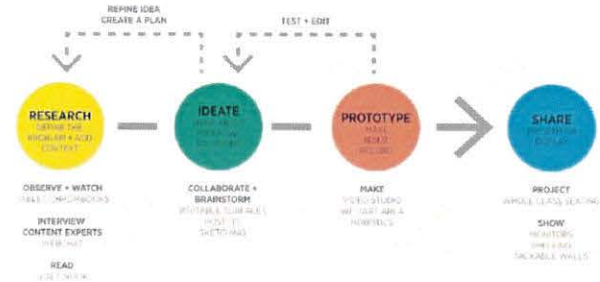
### -THE TOOLS

VIRTUAL EXPERIENCES / ONLINE LEARNING  
TECHNOLOGY INTEGRATION  
INTERACTIVE SURFACES  
HANDS-ON TOOLS + MATERIALS

### -THE CURRICULUM

PROJECT BASED LEARNING  
DEVELOP THE 4 C'S:  
CRITICAL THINKING, COLLABORATION,  
COMMUNICATION, AND CREATIVITY

### PROJECT BASED LEARNING PROCESS

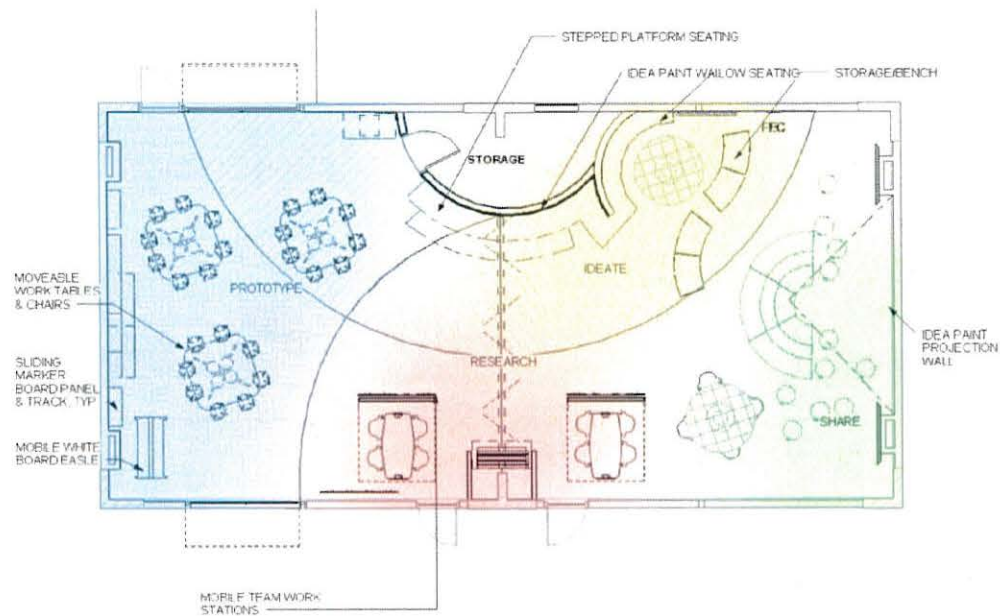
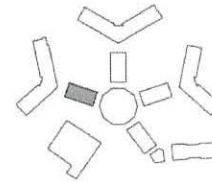


DOUGHERTY + DOUGHERTY ARCHITECTS  
11.17.15

Berryessa Union School District  
Modernization

# FLEXIBLE INSTRUCTION SPACE

NOBLE



(INSTRUCTIONAL LAYOUT)

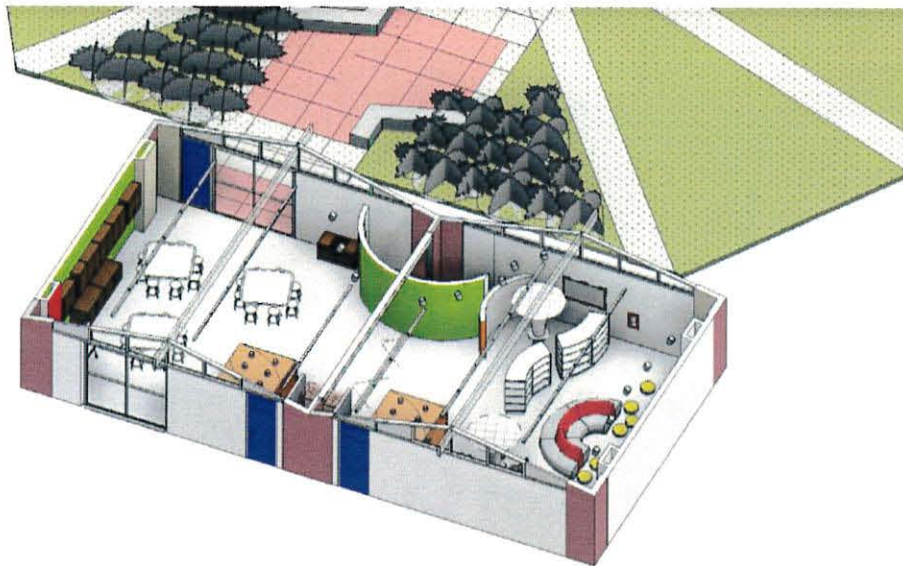


DOUGHERTY + DOUGHERTY ARCHITECTS  
11.17.15

Berryessa Union School District  
Modernization

# FLEXIBLE INSTRUCTION SPACE

NOBLE



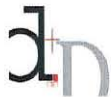
DOUGHERTY + DOUGHERTY ARCHITECTS  
11.17.15

Berryessa Union School District  
Modernization



# FLEXIBLE INSTRUCTION SPACE

NOBLE



DOUGHERTY + DOUGHERTY ARCHITECTS  
11.17.15

Berryessa Union School District  
Modernization



# FLEXIBLE INSTRUCTION SPACE

NORTHWOOD



DOUGHERTY + DOUGHERTY ARCHITECTS  
11.17.15

Berryessa Union School District  
Modernization

# FLEXIBLE INSTRUCTION SPACE

## NORTHWOOD



DOUGHERTY + DOUGHERTY ARCHITECTS  
11 17 15

Berryessa Union School District  
Modernization

# FLEXIBLE INSTRUCTION SPACE

## NORTHWOOD



DOUGHERTY + DOUGHERTY ARCHITECTS  
11.17.15

Berryessa Union School District  
Modernization

# **Construction Projects for 2016 Noble/Northwood F.I.S./School Campus Modernization Bid, Award, Construction, and Closeout**

## **Next Steps:**

- Complete Drawings for submission to DSA 11/2015
- DSA Review 11/2015 – 4/2016
- Bidding 4/2016
- Award 6/2016
- Site Packing and Moving 6/2016
- Contractor Mobilization 6/2016
- Begin Construction 6/2016
- Construction Complete 8/2016
- Project Closeout 8/2016

November 17, 2015

# Construction Projects for 2016

1. Central Kitchen
2. F.I.S./School Modernization
  - Noble ES
  - Northwood ES
  - Sierramont MS
  - Summerdale ES
  - Vinci Park ES (Resolving Scope Issues and Schedule Adjustment)
3. **Energy Conservation Project - Solar**
4. Phase II LAN Upgrade Cable Removal and replacement
5. Phase I LAN Upgrade Update

November 17, 2015

# Construction Projects for 2016

## Energy Conservation Project - Solar

### Design and Negotiations

- Contract Negotiations – In progress
- Cost Proposal/Performance Guarantee – In progress
- Board Approval – TBD

### Post Board Approval of Contract

- DSA Submittal, Review and Approval - TBD
- Construction – TBD
- Turnover – TBD
- Electricity Production – TBD

November 17, 2015



# Construction Projects for 2016

1. Central Kitchen
2. F.I.S./School Modernization
  - Noble ES
  - Northwood ES
  - Sierramont MS
  - Summerdale ES
  - Vinci Park ES (Resolving Scope Issues and Schedule Adjustment)
3. Energy Conservation Project - Solar
4. **Phase II LAN Upgrade Cable Removal and Replacement**
5. Phase I LAN Upgrade Update

November 17, 2015

# Construction Projects for 2015

## Phase II LAN Upgrade Cable Removal and Replacement

Remaining 10 School Sites

- Prepare Bid Package 1/2015
- Bidding 2/2016
- Award 4/2016
- Contractor Mobilization 6/2016
- Construction 6/2016 – 7/2016
- Project Closeout 8/2016

November 17, 2015

# Construction Projects for 2016

1. Central Kitchen
2. F.I.S./School Modernization
  - Noble ES
  - Northwood ES
  - Sierramont MS
  - Summerdale ES
  - Vinci Park ES (Resolving Scope Issues and Schedule Adjustment)
3. Energy Conservation Project - Solar
4. Phase II LAN Upgrade Cable Removal and Replacement
5. **Phase I LAN Upgrade Update**

November 17, 2015

# Construction Projects for 2016

## Phase I LAN Upgrade Cable Removal and Replacement

- Staff is currently assessing the completed work to determine what is needed to complete the project
- The missing items will be assigned to a new contractor so that the work can be completed
- A schedule to get the work completed will be developed once the scope is defined
- The cost will be back-charged to the original Phase I contractor
- Current condition of network; minor issues throughout the district. The District will contract staff augmentation to assist with work load as needed.

November 17, 2015

# **Design and Construction Projects for 2016/2017**

November 17, 2015

# Design Projects for 2016 Construction 2017

## F.I.S./School Campus Modernization

- Laneview ES
- Ruskin ES
- Piedmont MS
- Toyon ES

November 17, 2015



**Berryessa Union School District**  
**Measure L Bond Construction Program**

**Thank You**

November 17, 2015

**Project Budget**  
 BERRYESSA UNION SCHOOL DISTRICT  
 MEASURE L BOND  
 2014-15  
 June 30, 2015

Cost Control Summary

SUMMARY				
Description	Adopted Budget	Operating Budget	Total Expended to Date	Balance
	01/21/15	06/30/15	06/30/15	
<b>HARD CONSTRUCTION COSTS</b>				
Construction	\$ 50,912,596.72	\$ 50,912,596.68	\$ 1,020,118.56	\$ (49,892,478.12)
Construction Contingency	\$ 4,598,258.97	\$ 4,598,258.97	\$ -	\$ (4,598,258.97)
<b>Sub-Total Hard Costs</b>	<b>\$ 55,510,855.69</b>	<b>\$ 55,510,855.65</b>	<b>\$ 1,020,118.56</b>	<b>\$ (54,490,737.09)</b>
<b>SOFT CONSTRUCTION COSTS</b>				
<b>Architectural &amp; Engineering</b>				
Architectural & Engineering	\$ 4,881,292.87	\$ 4,881,292.87	\$ 198,367.92	\$ (4,682,924.95)
Architectural & Engineering Reimbursable	\$ 221,825.27	\$ 221,825.27	\$ -	\$ (221,825.27)
<b>Specialty Consultants</b>				
Engineering Studies / Surveys	\$ 65,000.00	\$ 65,000.00	\$ 11,000.00	\$ (54,000.00)
Kitchen Consultant	\$ 50,000.00	\$ 50,000.00	\$ -	\$ (50,000.00)
Geotechnical Report	\$ 52,000.00	\$ 52,000.00	\$ 7,150.00	\$ (44,850.00)
Hazardous Material Consulting	\$ -	\$ -	\$ -	\$ -
CEQA	\$ 31,000.00	\$ 31,000.00	\$ -	\$ (31,000.00)
Technology Consultant	\$ 80,000.00	\$ 80,000.00	\$ -	\$ (80,000.00)
<b>Construction Management</b>				
Construction Management	\$ 2,868,536.52	\$ 2,868,536.62	\$ 22,122.00	\$ (2,846,414.62)
Reimbursable	\$ 130,620.09	\$ 130,620.18	\$ -	\$ (130,620.18)
<b>Plan Check &amp; Permit Fees</b>				
ORS/Division of the State Architect Fee	\$ 393,495.50	\$ 393,495.50	\$ -	\$ (393,495.50)
CDE Fee	\$ -	\$ -	\$ -	\$ -
Other Permit & Plan Check Fees	\$ 50,000.00	\$ 50,000.00	\$ -	\$ (50,000.00)
Utilities Fee	\$ 150,000.00	\$ 150,000.00	\$ -	\$ (150,000.00)
<b>Document Reproduction</b>				
Document Reproduction & Printing	\$ 80,000.00	\$ 80,000.00	\$ 1,793.10	\$ (78,206.90)
Advertisement	\$ 12,000.00	\$ 12,000.00	\$ 2,392.39	\$ (9,607.61)
<b>Testing &amp; Inspection</b>				
DSA Project Inspector	\$ 830,194.94	\$ 830,194.94	\$ -	\$ (830,194.94)
Material Testing & Inspection	\$ 166,028.61	\$ 166,028.61	\$ -	\$ (166,028.61)
Geotechnical Inspection	\$ 70,750.00	\$ 70,750.00	\$ -	\$ (70,750.00)
Hazardous Material Inspection	\$ -	\$ -	\$ 20,425.00	\$ 20,425.00
<b>Miscellaneous Expenses</b>				
Legal Fees	\$ -	\$ -	\$ -	\$ -
State Funding Consultant	\$ -	\$ -	\$ -	\$ -
Community Relations Consultant	\$ -	\$ -	\$ -	\$ -
Miscellaneous	\$ 50,000.00	\$ 50,000.00	\$ 985.26	\$ (49,014.74)
Soft Cost Contingency	\$ 318,690.35	\$ 318,690.35	\$ -	\$ (318,690.35)
<b>Sub-Total Softs Costs</b>	<b>\$ 10,501,434.15</b>	<b>\$ 10,501,434.34</b>	<b>\$ 264,235.67</b>	<b>\$ (10,237,198.67)</b>
<b>OTHER PROJECT COSTS</b>				
Interim Housing	\$ -	\$ -	\$ -	\$ -
Moving	\$ 1,060,000.00	\$ 1,060,000.00	\$ -	\$ (1,060,000.00)
Furniture, Fixtures & Equipment	\$ 5,684,000.00	\$ 5,684,000.00	\$ -	\$ (5,684,000.00)
Security Equipment	\$ 27,500.00	\$ 27,500.00	\$ -	\$ (27,500.00)
<b>Sub-Total Other Project Costs</b>	<b>\$ 6,771,500.00</b>	<b>\$ 6,771,500.00</b>	<b>\$ -</b>	<b>\$ (6,771,500.00)</b>
<b>PROGRAM COSTS</b>				
<b>Administration</b>				
District Staff Cost/Program Management Costs	\$ 1,375,000.00	\$ 1,375,000.00	\$ 88,073.00	\$ (1,286,927.00)
Legal Fees	\$ 125,000.00	\$ 125,000.00	\$ 10,997.65	\$ (114,002.35)
<b>Special Consultants</b>				
Master Plan Costs	\$ 150,000.00	\$ 150,000.00	\$ 160,760.00	\$ 10,760.00
Hazardous Material Consulting	\$ 40,000.00	\$ 40,000.00	\$ -	\$ (40,000.00)
Geotechnical Report	\$ 50,000.00	\$ 50,000.00	\$ -	\$ (50,000.00)
Roofing Consultant	\$ -	\$ -	\$ -	\$ -
Design Guidelines, Standard Specifications	\$ 30,000.00	\$ 30,000.00	\$ -	\$ (30,000.00)
<b>Program Support Costs</b>				
Printing, Supplies & Reimbursables	\$ 65,000.00	\$ 65,000.00	\$ 1,936.02	\$ (63,063.98)
Office Equipment	\$ 25,000.00	\$ 25,000.00	\$ 22,139.05	\$ (2,860.95)
Interim Housing	\$ 125,000.00	\$ 125,000.00	\$ -	\$ (125,000.00)
Seminars/Training	\$ 10,000.00	\$ 10,000.00	\$ -	\$ (10,000.00)
Product Research	\$ 5,000.00	\$ 5,000.00	\$ -	\$ (5,000.00)
<b>Public Relations and Contractor Outreach</b>				
Public Relations/Communications	\$ 75,000.00	\$ 75,000.00	\$ -	\$ (75,000.00)
Public Bid Advertising	\$ 15,000.00	\$ 15,000.00	\$ -	\$ (15,000.00)
<b>Bond Costs</b>				
Bond Counsel Advisor	\$ 170,000.00	\$ 170,000.00	\$ 88,000.00	\$ (82,000.00)
Bond Underwriter	\$ 470,000.00	\$ 470,000.00	\$ -	\$ (470,000.00)
Issuance Costs	\$ 30,000.00	\$ 30,000.00	\$ 57,000.00	\$ 27,000.00
Disclosure Counsel	\$ 40,000.00	\$ 40,000.00	\$ 20,000.00	\$ (20,000.00)
Financial Advisor	\$ 90,000.00	\$ 90,000.00	\$ 45,000.00	\$ (45,000.00)
Election Costs	\$ 60,000.00	\$ 60,000.00	\$ 32,927.00	\$ (27,073.00)
<b>Program Contingency</b>				
Program Cost Contingency	\$ 88,500.00	\$ 88,500.00	\$ -	\$ (88,500.00)
<b>Total Program Costs</b>	<b>\$ 3,038,500.00</b>	<b>\$ 3,038,500.00</b>	<b>\$ 526,832.72</b>	<b>\$ (2,511,667.28)</b>
<b>Bond Reserve</b>	<b>\$ 1,177,710.50</b>	<b>\$ 1,177,710.50</b>	<b>\$ -</b>	<b>\$ (1,177,710.50)</b>
<b>TOTAL CONSTRUCTION PROGRAM COSTS</b>	<b>\$ 77,000,000.34</b>	<b>\$ 77,000,000.49</b>	<b>\$ 1,811,186.95</b>	<b>\$ (75,188,813.54)</b>



**Project Budget**  
 BERRYESSA UNION SCHOOL DISTRICT  
 MEASURE L BOND  
 1st Quarter  
 07/01/2015 - 09/30/2015  
 Cost Control Summary

<b>SUMMARY</b>				
Description	Adopted Budget	Operating Budget	Total Expended to Date	Balance
	01/21/15	07/01/15	09/30/15	
<b>HARD CONSTRUCTION COSTS</b>				
Construction	\$ 50,912,596.72	\$ 49,892,478.12	\$ 2,607,458.38	\$ (47,285,019.74)
Construction Contingency	\$ 4,598,258.97	\$ 4,598,258.97	\$ -	\$ (4,598,258.97)
<b>Sub-Total Hard Costs</b>	<b>\$ 55,510,855.69</b>	<b>\$ 54,490,737.09</b>	<b>\$ 2,607,458.38</b>	<b>\$ (51,883,278.71)</b>
<b>SOFT CONSTRUCTION COSTS</b>				
<b>Architectural &amp; Engineering</b>				
Architectural & Engineering	\$ 4,881,292.87	\$ 4,682,924.95	\$ 28,375.70	\$ (4,654,549.25)
Architectural & Engineering Reimbursable	\$ 221,825.27	\$ 221,825.27	\$ -	\$ (221,825.27)
<b>Specialty Consultants</b>				
Engineering Studies / Surveys	\$ 65,000.00	\$ 54,000.00	\$ -	\$ (54,000.00)
Kitchen Consultant	\$ 50,000.00	\$ 50,000.00	\$ -	\$ (50,000.00)
Geotechnical Report	\$ 52,000.00	\$ 44,850.00	\$ -	\$ (44,850.00)
Hazardous Material Consulting	\$ -	\$ -	\$ -	\$ -
CEQA	\$ 31,000.00	\$ 31,000.00	\$ -	\$ (31,000.00)
Technology Consultant	\$ 80,000.00	\$ 80,000.00	\$ -	\$ (80,000.00)
<b>Construction Management</b>				
Construction Management	\$ 2,868,536.52	\$ 2,846,414.62	\$ -	\$ (2,846,414.62)
Reimbursable	\$ 130,620.09	\$ 130,620.18	\$ -	\$ (130,620.18)
<b>Plan Check &amp; Permit Fees</b>				
ORS/Division of the State Architect Fee	\$ 393,495.50	\$ 393,495.50	\$ -	\$ (393,495.50)
CDE Fee	\$ -	\$ -	\$ -	\$ -
Other Permit & Plan Check Fees	\$ 50,000.00	\$ 50,000.00	\$ -	\$ (50,000.00)
Utilities Fee	\$ 150,000.00	\$ 150,000.00	\$ -	\$ (150,000.00)
<b>Document Reproduction</b>				
Document Reproduction & Printing	\$ 80,000.00	\$ 78,206.90	\$ -	\$ (78,206.90)
Advertisement	\$ 12,000.00	\$ 9,607.61	\$ 414.74	\$ (9,192.87)
<b>Testing &amp; Inspection</b>				
DSA Project Inspector	\$ 830,194.94	\$ 830,194.94	\$ -	\$ (830,194.94)
Material Testing & Inspection	\$ 166,028.61	\$ 166,028.61	\$ -	\$ (166,028.61)
Geotechnical Inspection	\$ 70,750.00	\$ 70,750.00	\$ -	\$ (70,750.00)
Hazardous Material Inspection	\$ -	\$ (20,425.00)	\$ -	\$ 20,425.00
<b>Miscellaneous Expenses</b>				
Legal Fees	\$ -	\$ -	\$ -	\$ -
State Funding Consultant	\$ -	\$ -	\$ -	\$ -
Community Relations Consultant	\$ -	\$ -	\$ -	\$ -
Miscellaneous	\$ 50,000.00	\$ 49,014.74	\$ 4,177.31	\$ (44,837.43)
Soft Cost Contingency	\$ 318,690.35	\$ 318,690.35	\$ -	\$ (318,690.35)
<b>Sub-Total Softs Costs</b>	<b>\$ 10,501,434.15</b>	<b>\$ 10,237,198.67</b>	<b>\$ 32,967.75</b>	<b>\$ (10,204,230.92)</b>
<b>OTHER PROJECT COSTS</b>				
Interim Housing	\$ -	\$ -	\$ -	\$ -
Moving	\$ 1,060,000.00	\$ 1,060,000.00	\$ -	\$ (1,060,000.00)
Furniture, Fixtures & Equipment	\$ 5,684,000.00	\$ 5,684,000.00	\$ -	\$ (5,684,000.00)
Security Equipment	\$ 27,500.00	\$ 27,500.00	\$ -	\$ (27,500.00)
Other Duties	\$ -	\$ -	\$ 2,161.18	\$ -
<b>Sub-Total Other Project Costs</b>	<b>\$ 6,771,500.00</b>	<b>\$ 6,771,500.00</b>	<b>\$ 2,161.18</b>	<b>\$ (6,771,500.00)</b>
<b>PROGRAM COSTS</b>				
<b>Administration</b>				
District Staff Cost/Program Management Costs	\$ 1,375,000.00	\$ 1,286,927.00	\$ 54,774.72	\$ (1,232,152.28)
Legal Fees	\$ 125,000.00	\$ 114,002.35	\$ 2,662.23	\$ (111,340.12)
<b>Special Consultants</b>				
Master Plan Costs	\$ 150,000.00	\$ (10,760.00)	\$ -	\$ 10,760.00
Hazardous Material Consulting	\$ 40,000.00	\$ 40,000.00	\$ -	\$ (40,000.00)
Geotechnical Report	\$ 50,000.00	\$ 50,000.00	\$ -	\$ (50,000.00)
Roofing Consultant	\$ -	\$ -	\$ -	\$ -
Design Guidelines, Standard Specifications	\$ 30,000.00	\$ 30,000.00	\$ -	\$ (30,000.00)
<b>Program Support Costs</b>				
Printing, Supplies & Reimbursables	\$ 65,000.00	\$ 63,063.98	\$ 2,604.92	\$ (60,459.06)
Office Equipment	\$ 25,000.00	\$ 2,860.95	\$ 2,070.59	\$ (790.36)
Interim Housing	\$ 125,000.00	\$ 125,000.00	\$ -	\$ (125,000.00)
Seminars/Training	\$ 10,000.00	\$ 10,000.00	\$ -	\$ (10,000.00)
Product Research	\$ 5,000.00	\$ 5,000.00	\$ -	\$ (5,000.00)
<b>Public Relations and Contractor Outreach</b>				
Public Relations/Communications	\$ 75,000.00	\$ 75,000.00	\$ -	\$ (75,000.00)
Public Bid Advertising	\$ 15,000.00	\$ 15,000.00	\$ -	\$ (15,000.00)
<b>Bond Costs</b>				
Bond Counsel Advisor	\$ 170,000.00	\$ 82,000.00	\$ -	\$ (82,000.00)
Bond Underwriter	\$ 470,000.00	\$ 470,000.00	\$ -	\$ (470,000.00)
Issuance Costs	\$ 30,000.00	\$ (27,000.00)	\$ -	\$ 27,000.00
Disclosure Counsel	\$ 40,000.00	\$ 20,000.00	\$ -	\$ (20,000.00)
Financial Advisor	\$ 90,000.00	\$ 45,000.00	\$ -	\$ (45,000.00)
Election Costs	\$ 60,000.00	\$ 27,073.00	\$ -	\$ (27,073.00)
<b>Program Contingency</b>				
Program Cost Contingency	\$ 88,500.00	\$ 88,500.00	\$ -	\$ (88,500.00)
<b>Total Program Costs</b>	<b>\$ 3,038,500.00</b>	<b>\$ 2,511,667.28</b>	<b>\$ 62,112.46</b>	<b>\$ (2,449,554.82)</b>
<b>Bond Reserve</b>	<b>\$ 1,177,710.50</b>	<b>\$ 1,177,710.50</b>	<b>\$ -</b>	<b>\$ (1,177,710.50)</b>
<b>TOTAL CONSTRUCTION PROGRAM COSTS</b>	<b>\$ 77,000,000.34</b>	<b>\$ 75,188,813.54</b>	<b>\$ 2,704,699.77</b>	<b>\$ (72,484,113.77)</b>

# Berryessa Union School District Measure L Construction Bond Program

## Safety and Security Fencing Program

Each site includes some level of Safety and Security Fencing. This will be determined on a site by site basis during design.

Phase	School	Planned Completion	Status
I	Brooktree	2015	Complete
I	Majestic Way	2015	Complete
I	Northwood	2015	Complete
I	Vinci Park	2015	Complete
II	Noble	2016	Design
II	Summerdale	2016	Design
II	Sierramont	2016	Planned
III	Laneview	2017	Planned
III	Ruskin	2017	Planned
III	Toyon	2017	Planned
III	Piedmont	2017	Planned
IV	Cherrywood	2018	Planned
IV	Morrill	2018	Planned

